

## The Siuslaw Water Trail

The Water Trail has over 30 river-miles of paddling opportunities along the North Fork and mainstem Siuslaw River between Mapleton, Oregon and the Pacific Ocean.



Siuslaw Watershed Council

## Water Trail Information

Plan in advance for a safe boating experience. See the Water Trail website for more information.

- Tide levels and times for the Siuslaw River entrance and Florence available at [www.saltwatertides.com](http://www.saltwatertides.com)
- Detailed weather forecasts and river level predictions available at [www.wrh.noaa.gov/pqr](http://www.wrh.noaa.gov/pqr)
- Fees may be required at certain launch sites
- Paddle at your own risk



Confederated Tribes of the Coos, Lower Umpqua, and the Siuslaw

## Directions:



The Siuslaw Water Trail can be accessed between Mapleton and Florence, Oregon, from points along Highway 126 and from Old Town Florence.

For detailed directions:



Photo by Wesley Voth

[www.siuslawwatertrail.com](http://www.siuslawwatertrail.com)

## Project Partners

Siuslaw Watershed Council  
Confederated Tribes of the Coos, Lower Umpqua, and the Siuslaw Indians  
Oregon Parks & Recreation Department  
National Park Service  
Lane County Parks

# Siuslaw Water Trail



[www.siuslawwatertrail.com](http://www.siuslawwatertrail.com)



Photo by Wesley Voth

*Estuarine Sloughs* ♦ *Spruce Swamps*

*Historic Waterfronts* ♦ *Sand Dunes*



# Siuslaw River Water Trails

Siuslaw Watershed Council 2011

## Trails

▲▲▲ North Bank: 17.40 miles

▲▲▲ North Fork: 4.88 miles

▲▲▲ Old Town Sunset Loop: 3.06 miles

▲▲▲ South Bank Adventure: 9.75 miles

💰 Fee Site

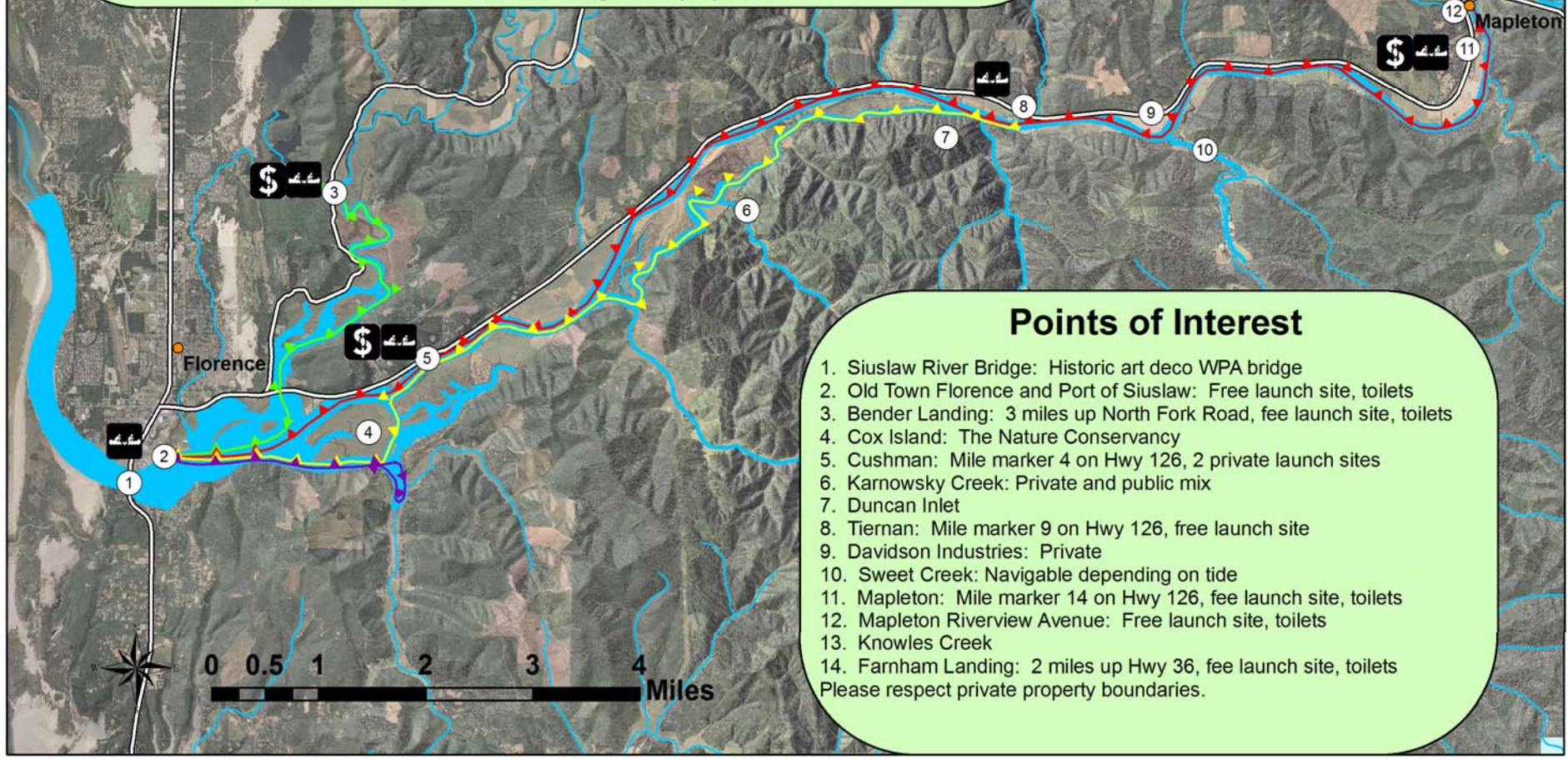
🚣 Launch Site

○ POI

● City/Town

Note: This map is a guide of paddle opportunities along the Siuslaw River. River and weather conditions change quickly, so please consult the local paddle shops, Port of Siuslaw, and local tide charts for current weather, river, and ocean conditions.

\* This map is not intended to be used for navigational purposes.



## Points of Interest

1. Siuslaw River Bridge: Historic art deco WPA bridge
  2. Old Town Florence and Port of Siuslaw: Free launch site, toilets
  3. Bender Landing: 3 miles up North Fork Road, fee launch site, toilets
  4. Cox Island: The Nature Conservancy
  5. Cushman: Mile marker 4 on Hwy 126, 2 private launch sites
  6. Karnowsky Creek: Private and public mix
  7. Duncan Inlet
  8. Tiernan: Mile marker 9 on Hwy 126, free launch site
  9. Davidson Industries: Private
  10. Sweet Creek: Navigable depending on tide
  11. Mapleton: Mile marker 14 on Hwy 126, fee launch site, toilets
  12. Mapleton Riverview Avenue: Free launch site, toilets
  13. Knowles Creek
  14. Farnham Landing: 2 miles up Hwy 36, fee launch site, toilets
- Please respect private property boundaries.